



## VILLAS AT EIGHTEEN – COME HOME TO THE FINEST



The villas, peaceful and extremely private, are created to comfort and delight both Pakistani families and overseas nationals – anyone familiar with international living and with expectations of the very best. With four, five (up to seven) bedroom models, they are exceedingly well-constructed and blend beautifully with their natural surroundings. No expense has been spared, no detail left to be considered. Their contemporary design features elegant living areas, large kitchens and indulgent bedroom and bathroom suites. Each villa looks out onto wide parkways, and all are carefully sited to maximize vistas of the golf course and rolling hills of Eighteen.



FITTED KITCHEN



FITTED WARDROBES



PREMIUM FINISHES



AIR CONDITIONING



GOLF COMMUNITY

# 1/2 KANAL



## PLAN A

PLOT AREA:	2,206 ft <sup>2</sup> to 5,941 ft <sup>2</sup>
VILLA AREA:	2,745 ft <sup>2</sup>
BEDROOMS:	4
BATHROOMS:	4 En Suite, 1 for the maids
POWDER ROOM:	1
PARKING SPACE:	2 semi covered
CAR PORCH:	263 ft <sup>2</sup>



BEDROOMS



PARK  
VIEWS



PARKING  
SPACES

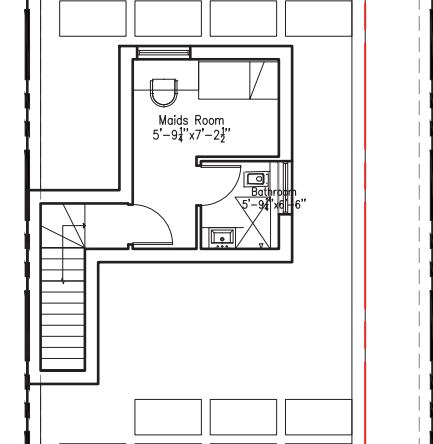
### GROUND FLOOR



### FIRST FLOOR



### SECOND FLOOR



# 1/2 KANAL



## PLAN B

- PLOT AREA: 2,206 ft<sup>2</sup> to 5,941 ft<sup>2</sup>
- VILLA AREA: 2,745 ft<sup>2</sup>
- BEDROOMS: 4
- BATHROOMS: 4 En Suite, 1 for the maids
- POWDER ROOM: 1
- PARKING SPACE: 2 semi covered
- CAR PORCH: 263 ft<sup>2</sup>



BEDROOMS



PARK VIEWS



PARKING SPACES

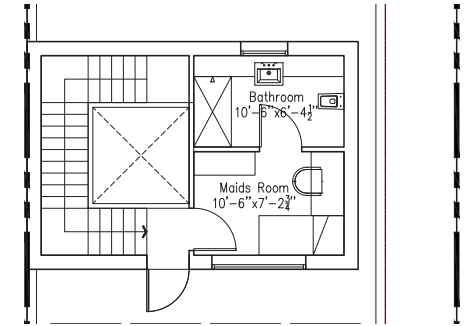
### GROUND FLOOR



### FIRST FLOOR



### SECOND FLOOR



# I KANAL



## PLAN

- PLOT AREA: 4,477 ft<sup>2</sup> to 8,977 ft<sup>2</sup>
- VILLA AREA: 5,005 ft<sup>2</sup>
- BEDROOMS: 5
- BATHROOMS: 5 En Suite, 1 for the maids
- POWDER ROOM: 1
- PARKING SPACE: 2 semi covered
- CAR PORCH: 327 ft<sup>2</sup>



BEDROOMS



PARK VIEWS



PARKING SPACES

GROUND FLOOR



FIRST FLOOR



SECOND FLOOR



# 2 KANAL



## PLAN A

PLOT AREA:	8,331 ft <sup>2</sup> to 10,494 ft <sup>2</sup>
VILLA AREA:	7,212 ft <sup>2</sup>
BEDROOMS:	5
BATHROOMS:	5 En Suite, 2 for the maids
POWDER ROOM:	1
PARKING SPACE:	2 covered
SWIMMING POOL:	Optional
CAR PORCH:	371.79 ft <sup>2</sup>



BEDROOMS



GOLF VIEWS



PARKING SPACES

## GROUND FLOOR



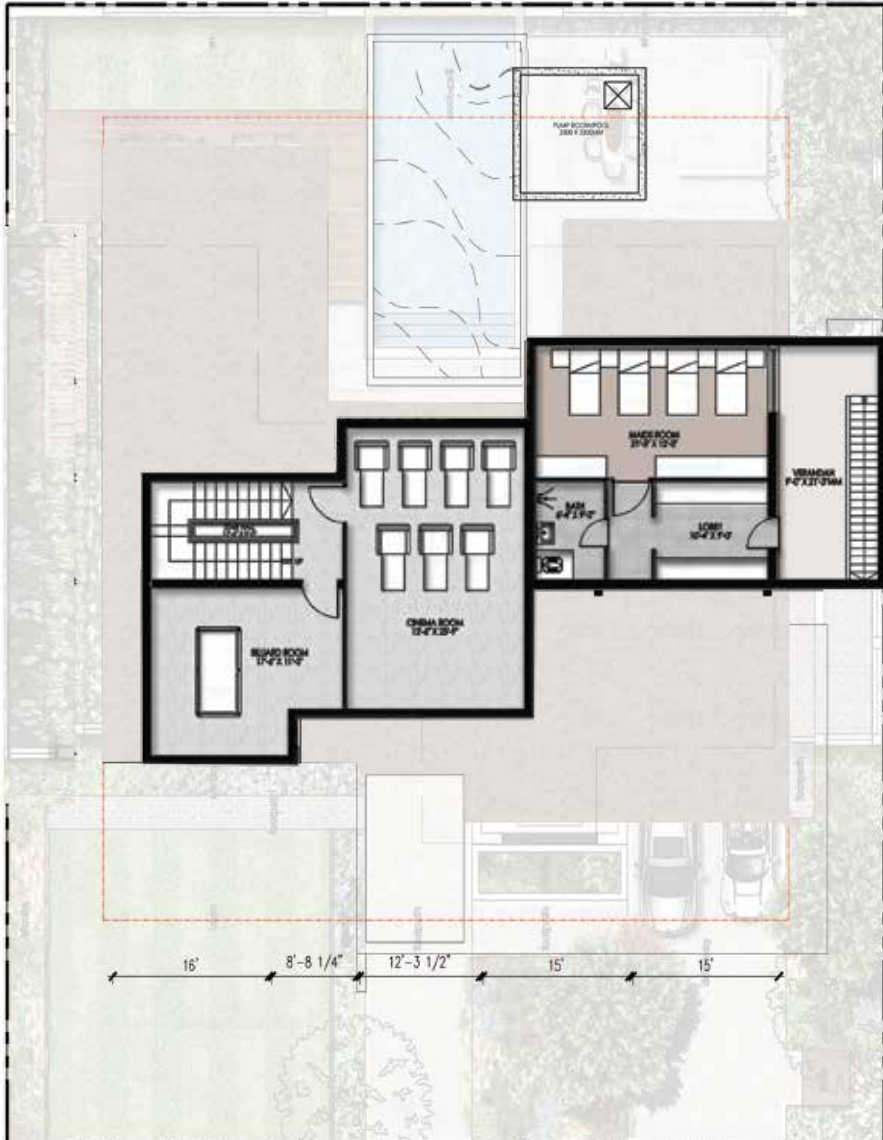
## SECOND FLOOR



FIRST FLOOR



BASEMENT



# 2 KANAL



## PLAN B

- PLOT AREA: 8,331 ft<sup>2</sup> to 10,494 ft<sup>2</sup>
- VILLA AREA: 7,212 ft<sup>2</sup>
- BEDROOMS: 5
- BATHROOMS: 5 En Suite, 2 for the maids
- POWDER ROOM: 1 Powder Room
- PARKING SPACE: 2 covered
- SWIMMING POOL: Optional
- CAR PORCH: 371.46 ft<sup>2</sup>



BEDROOMS



GOLF VIEWS

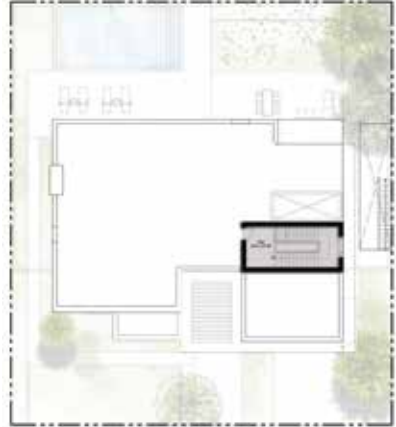


PARKING SPACES

GROUND FLOOR



SECOND FLOOR



FIRST FLOOR



BASEMENT





# 4 KANAL



## PLAN A

PLOT AREA:	18,008 ft <sup>2</sup> to 27,717 ft <sup>2</sup>
VILLA AREA:	9,903 ft <sup>2</sup>
BEDROOMS:	6
BATHROOMS:	6 En Suite, 2 for the maids
POWDER ROOM:	1
PARKING SPACE:	3 covered
SWIMMING POOL:	Optional
CAR PORCH:	553.26 ft <sup>2</sup>



BEDROOMS



GOLF  
VIEWS

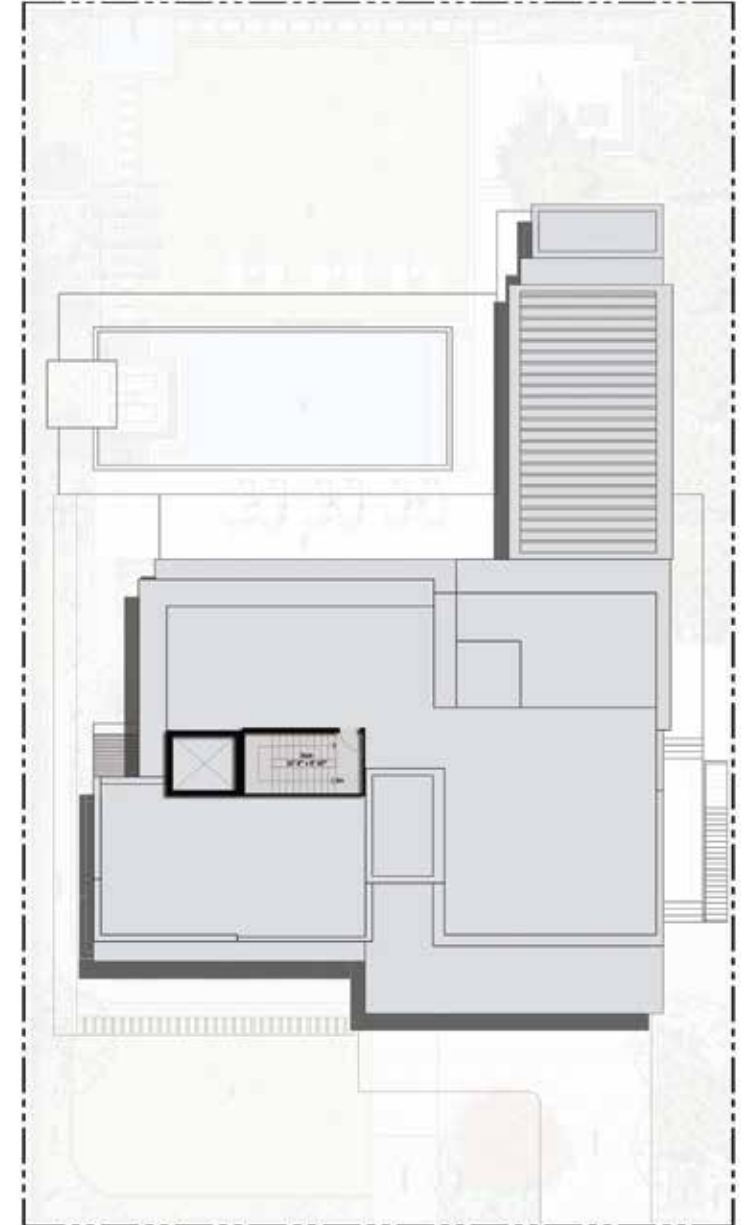


PARKING  
SPACES

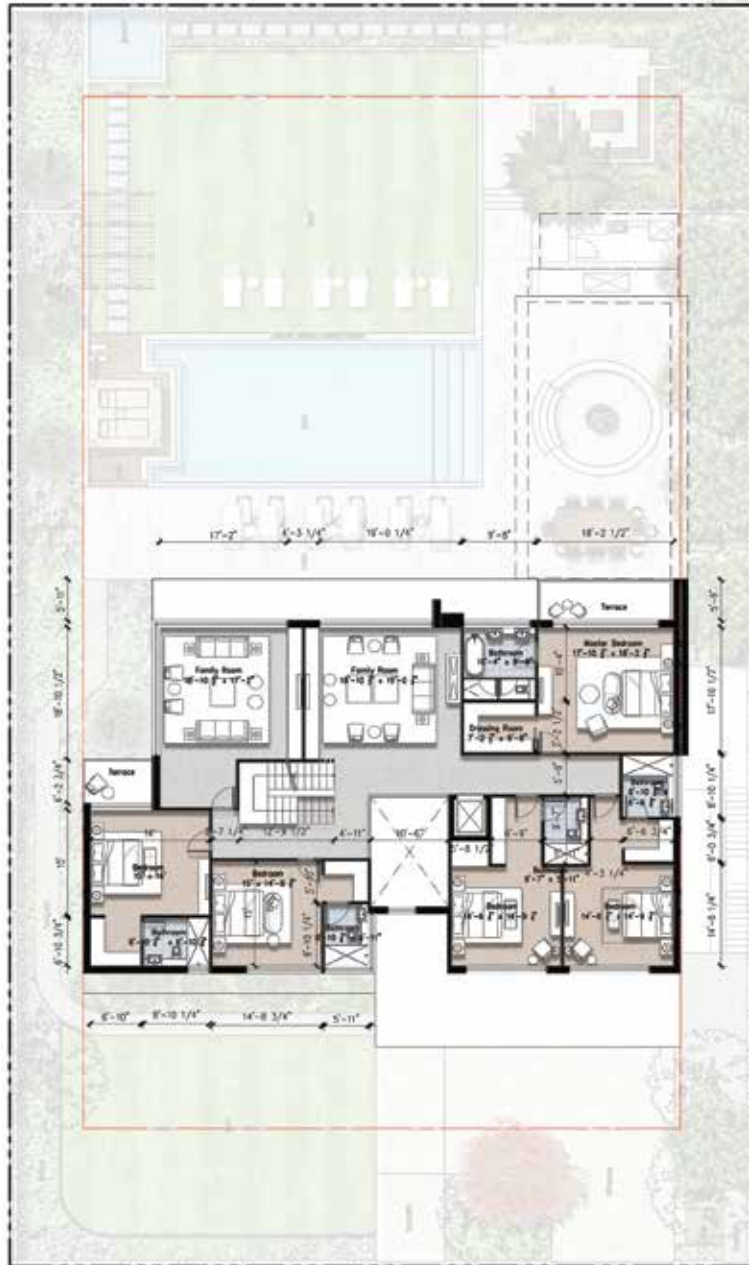
## GROUND FLOOR



## MUMTY FLOOR



FIRST FLOOR



BASEMENT



# 4 KANAL



## PLAN B

- PLOT AREA: 18,008 ft<sup>2</sup> to 27,717 ft<sup>2</sup>
- VILLA AREA: 9,903 ft<sup>2</sup>
- BEDROOMS: 6
- BATHROOMS: 6 En Suite, 2 for the maids
- POWDER ROOM: 1
- PARKING SPACE: 3 covered
- SWIMMING POOL: Optional
- CAR PORCH: 678 ft<sup>2</sup>



BEDROOMS



GOLF VIEWS

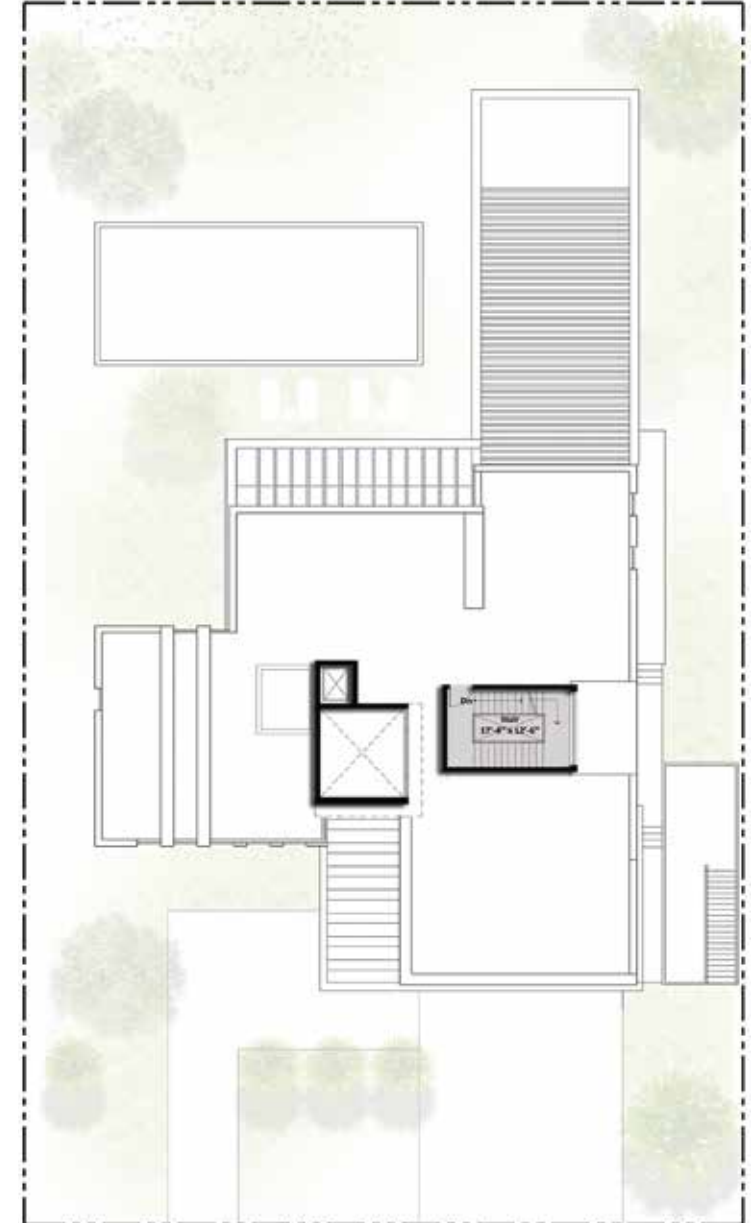


PARKING SPACES

## GROUND FLOOR



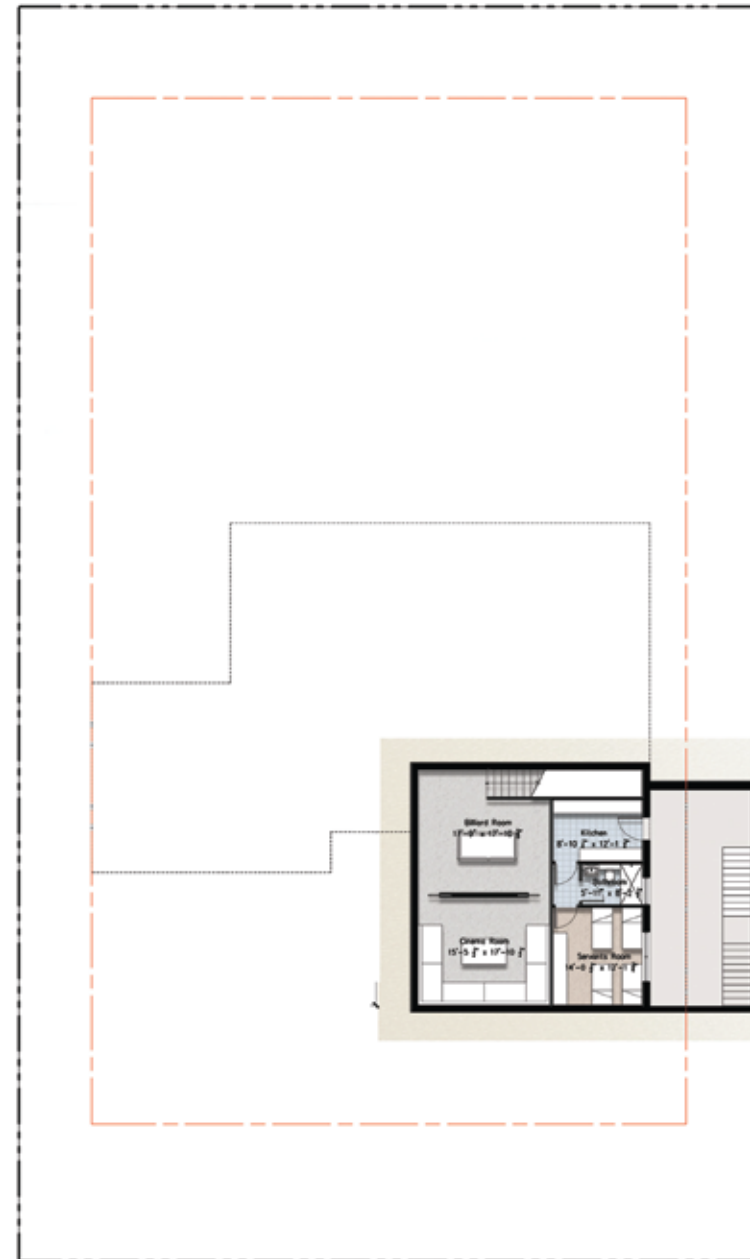
## MUMTY FLOOR



FIRST FLOOR



BASEMENT



# 8 KANAL



## PLAN

- PLOT AREA: 38,760 ft<sup>2</sup> to 44,465 ft<sup>2</sup>
- VILLA AREA: 13,993 ft<sup>2</sup>
- BEDROOMS: 7
- BATHROOMS: 7 En Suite, 3 for the maids
- POWDER ROOM: 4
- PARKING SPACE: 3 covered, 3 uncovered
- SWIMMING POOL: Optional
- CAR PORCH: 1007 ft<sup>2</sup>



BEDROOMS

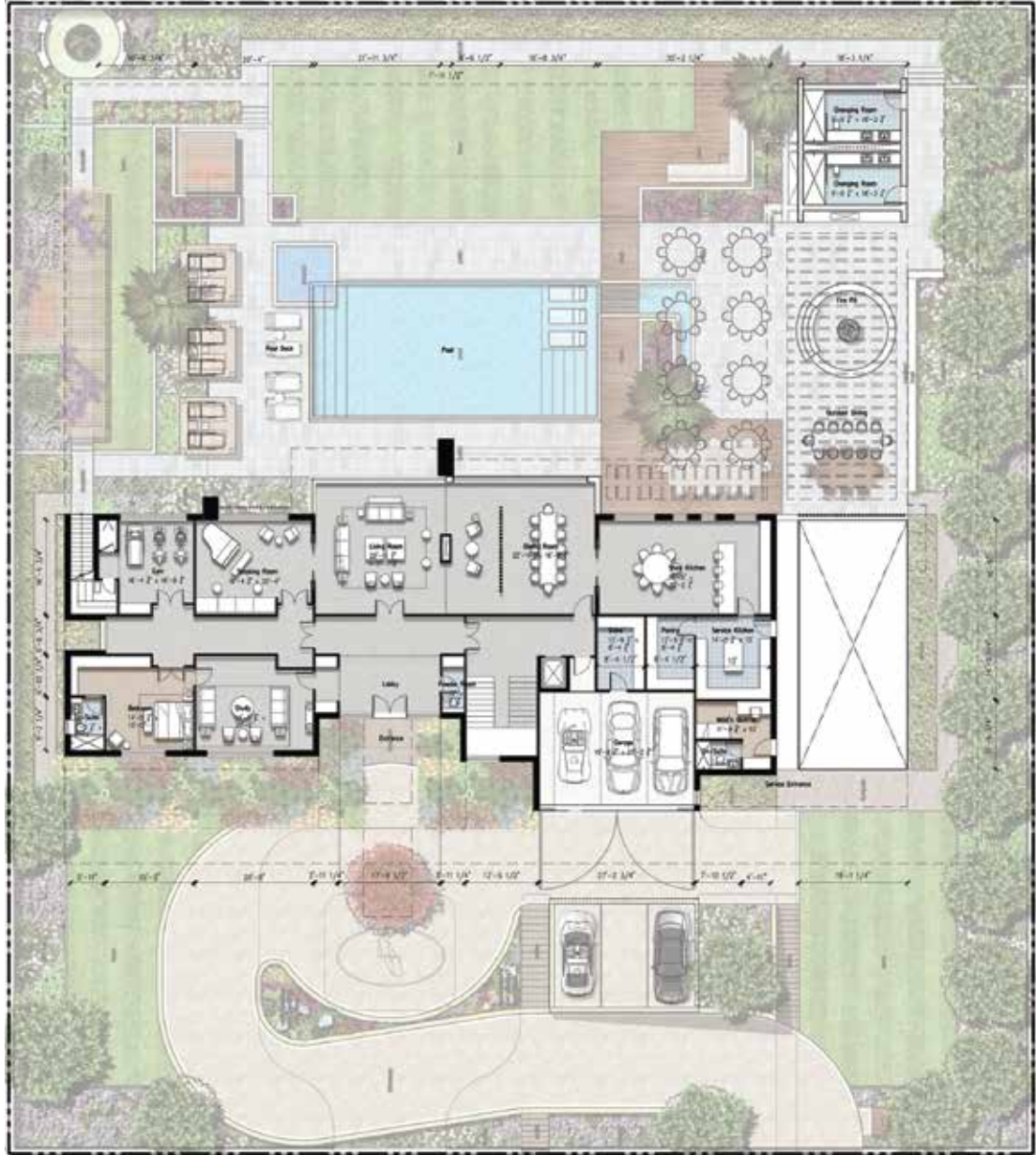


GOLF VIEWS



PARKING SPACES

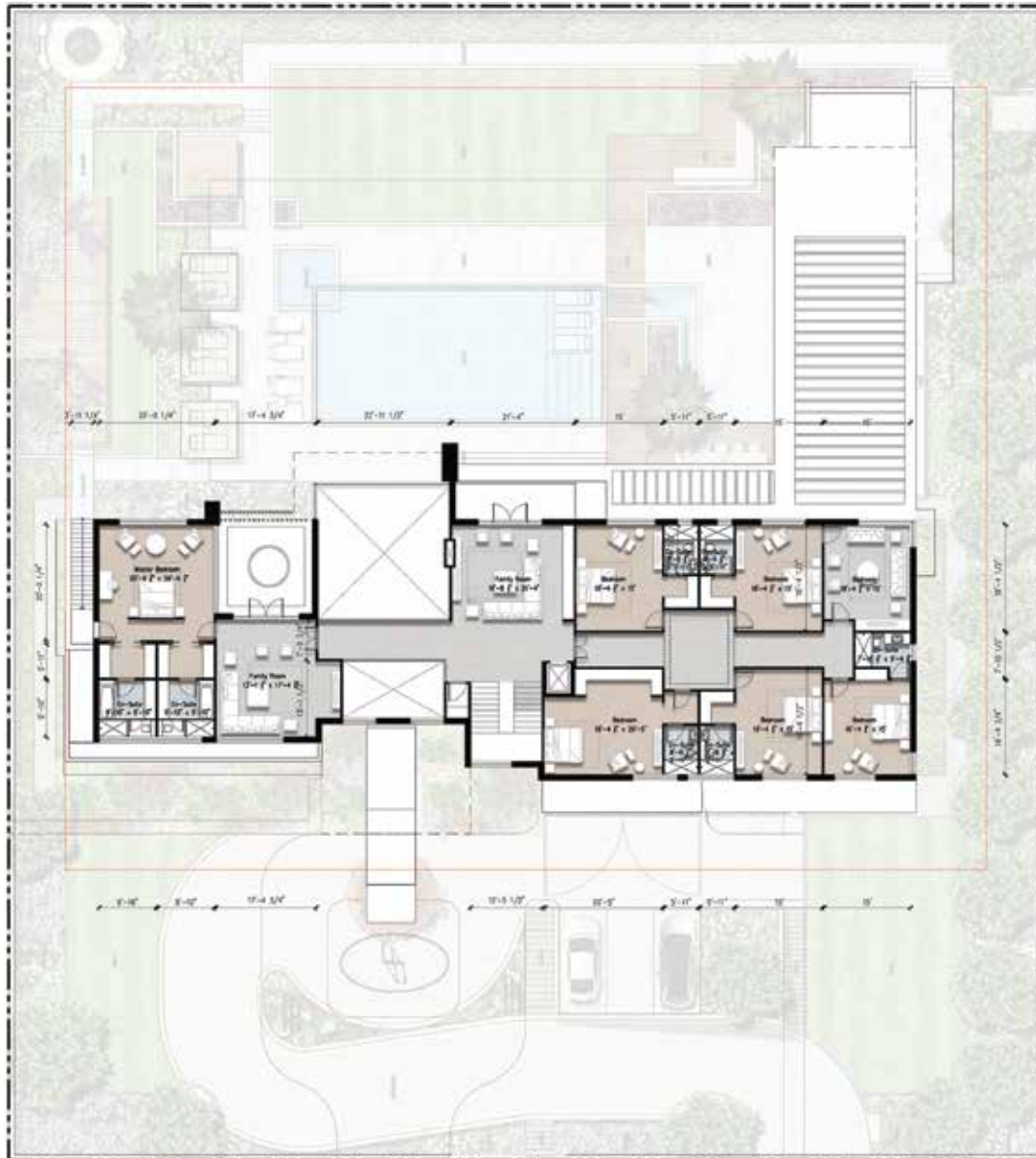
## GROUND FLOOR



## BASEMENT



FIRST FLOOR



MUMTY FLOOR

