



## THE HEIGHTS AT EIGHTEEN

Spread over 28 pavilion-style buildings, the Heights at Eighteen offer gracious, low-rise apartment living at a luxurious new standard. Apartments range from studio to five bedroom Penthouse, flexible enough to please a range of needs and lifestyles, and each one enjoys stunning views across the championship 18-hole golf course. Elegant, intimate and exclusive. The Heights combines the cosmopolitan appeal of apartment living with the privacy and service of Pakistan's finest development.



FITTED KITCHEN



FITTED WARDROBES



PREMIUM FINISHES



AIR CONDITIONING



GOLF VIEWS



# STUDIO APARTMENT

AREA: 775 ft<sup>2</sup>  
BEDROOM: 1  
BATHROOM: 1  
PARKING SPACE: 1



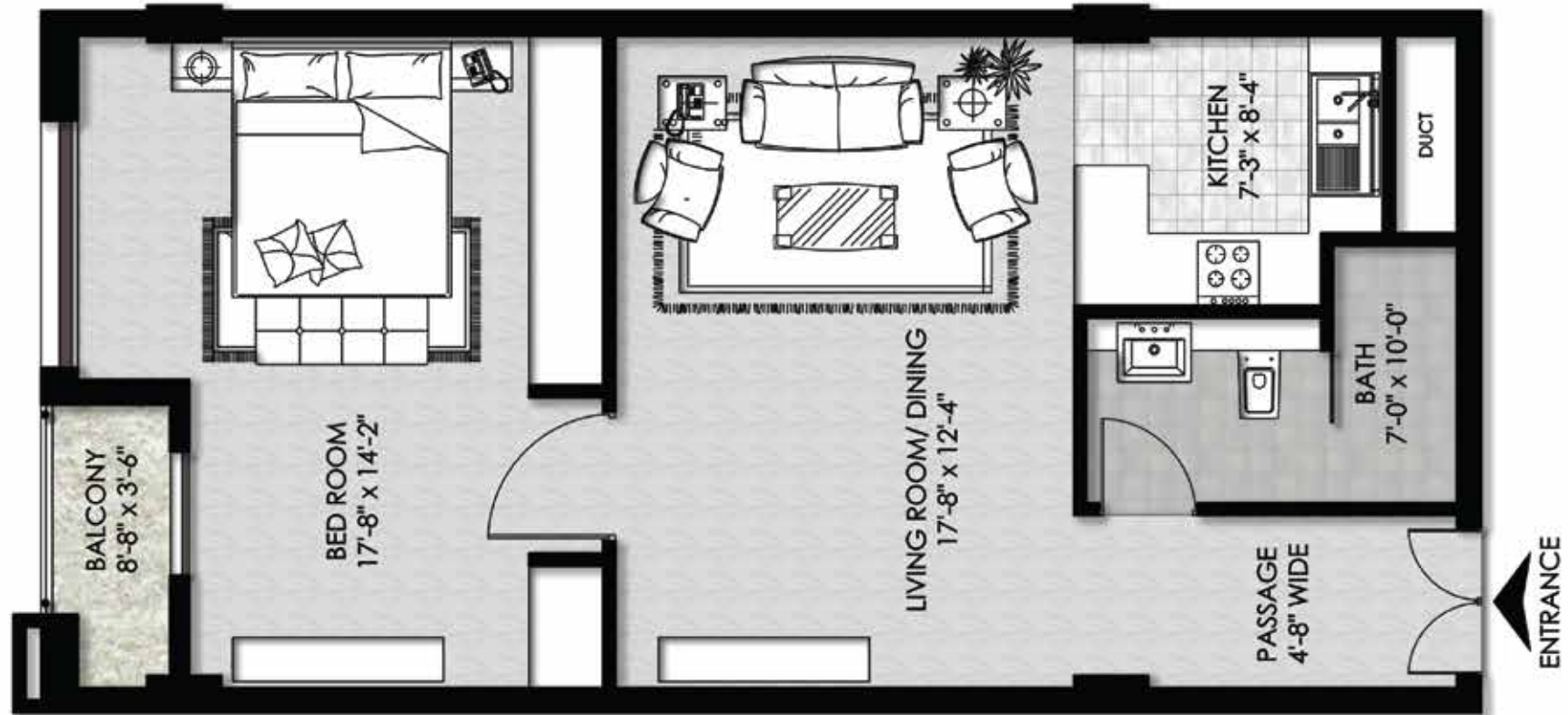
BEDROOMS



FITTED  
KITCHEN



FITTED  
WARDROBES



# 1 BED APARTMENT

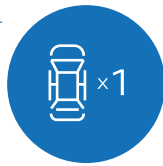
AREA: 969 ft<sup>2</sup>  
BEDROOM: 1  
BATHROOM: 1 En Suite  
POWDER ROOM: 1  
PARKING SPACE: 1



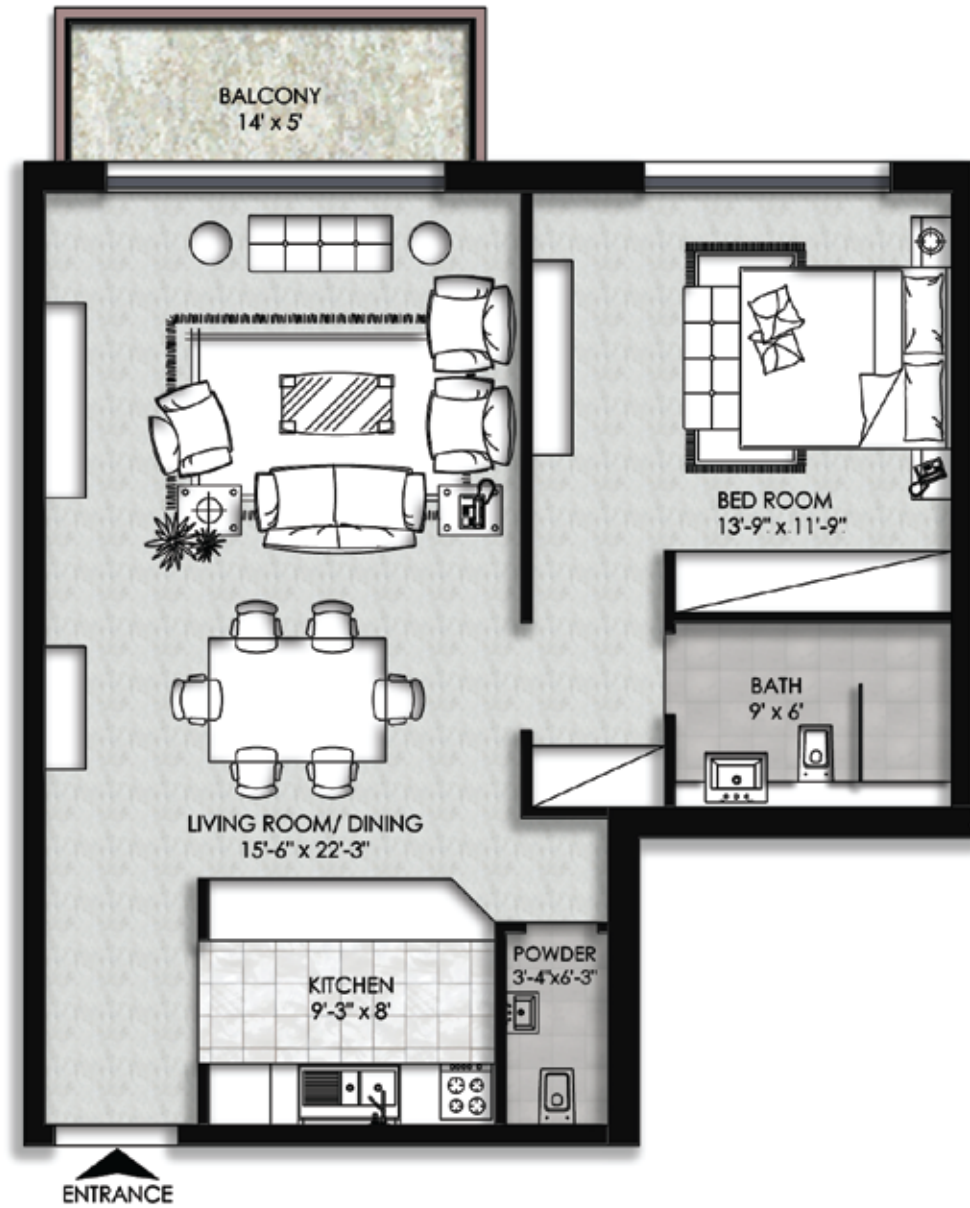
BEDROOMS



FITTED HOMES



PARKING SPACES



# 2 BED APARTMENT

AREA: 1,668 ft<sup>2</sup>  
BEDROOMS: 2  
BATHROOMS: 2 En Suite  
POWDER ROOM: 1  
PARKING SPACE: 1



BEDROOMS



FITTED  
HOMES



PARKING  
SPACES



# 3 BED APARTMENT

## PLAN A

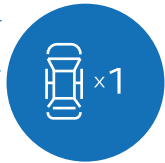
AREA: 2,196 ft<sup>2</sup>  
BEDROOMS: 3  
BATHROOMS: 3 En Suite, 1 for the maids  
POWDER ROOM: 1  
PARKING SPACE: 1



BEDROOMS



FITTED HOMES



PARKING SPACES





# 3 BED APARTMENT

## PLAN B

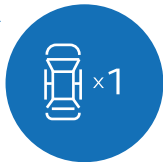
AREA: 2,207 ft<sup>2</sup>  
BEDROOMS: 3  
BATHROOMS: 3 En Suite, 1 for the maids  
POWDER ROOM: 1  
PARKING SPACE: 1



BEDROOMS



FITTED HOMES



PARKING SPACES



# PENTHOUSE

## PLAN A

- AREA: 4,410 ft<sup>2</sup>
- BEDROOMS: 5
- BATHROOMS: 5 En Suite, 1 for the maids
- POWDER ROOM: 1
- PARKING SPACE: 2



BEDROOMS



FITTED HOMES



PARKING SPACES



# PENTHOUSE

## PLAN B

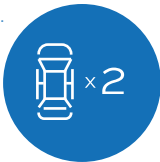
AREA: 4,575 ft<sup>2</sup>  
BEDROOMS: 5  
BATHROOMS: 5 En Suite, 1 for the maids  
POWDER ROOM: 1  
PARKING SPACE: 2



BEDROOMS



FITTED HOMES



PARKING SPACES

